

Borgstedtfelde 2012

Eintritt / Austritt

Prüfung Nr.: 21

Fehler/Zeit-Springen

Klasse: L

Sonntag, 29. April 2012

Beginn: 8:00 Uhr

Richtverf.: A
LPO § 501 / 1a1
RG / Art.
Höhe: 1,15 mtr.

Tempo: 350 m/Min.

Bahnlänge: 390 mtr.
Erlaubte Zeit: 67 sek.
Höchstzeit: 134 sek.

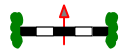
Hindernisse: 9
Sprünge: 11
Hindernisfehler: sek.
geschl. Hindernis:

1. Stechen über:

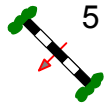
Bahnlänge: 0 mtr.
Erlaubte Zeit: 0 sek.
Höchstzeit: 0 sek.

2. Stechen über:

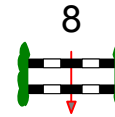
Bahnlänge: 0 mtr.
Erlaubte Zeit: 0 sek.
Höchstzeit: 0 sek.



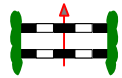
4b



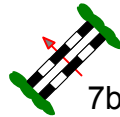
5



8



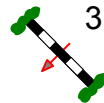
4a



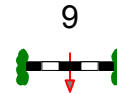
7b



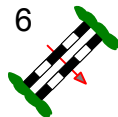
7a



3

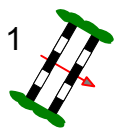


9

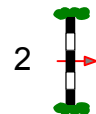


6

Start



1



2

Ziel

Parcourschef
Heinrich Wilhelm Meyer
Jörg Griese