

# Borgstedtfelde 2013

Eintritt / Austritt

Prüfung Nr.: 20

Fehler/Zeit-Springen

Klasse: A\*\*

Samstag, 27. April 2013

Beginn: 17:15 Uhr

Richtverf.: A  
LPO § 501 / 1a1  
RG / Art.  
Höhe: 0,95 mtr.

Tempo: 350 m/Min.

Bahnlänge: 420 mtr.  
Erlaubte Zeit: 72 sek.  
Höchstzeit: 144 sek.

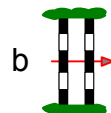
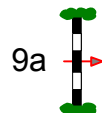
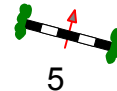
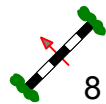
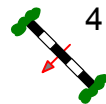
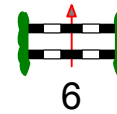
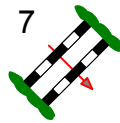
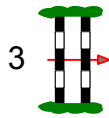
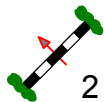
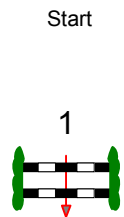
Hindernisse: 9  
Sprünge: 10  
Hindernisfehler: sek.  
geschl. Hindernis:

1. Stechen über:

Bahnlänge: 0 mtr.  
Erlaubte Zeit: 0 sek.  
Höchstzeit: 0 sek.

2. Stechen über:

Bahnlänge: 0 mtr.  
Erlaubte Zeit: 0 sek.  
Höchstzeit: 0 sek.



Ziel

*Parcourschef  
Hein Wilhelm Meyer  
Jörg Griese*