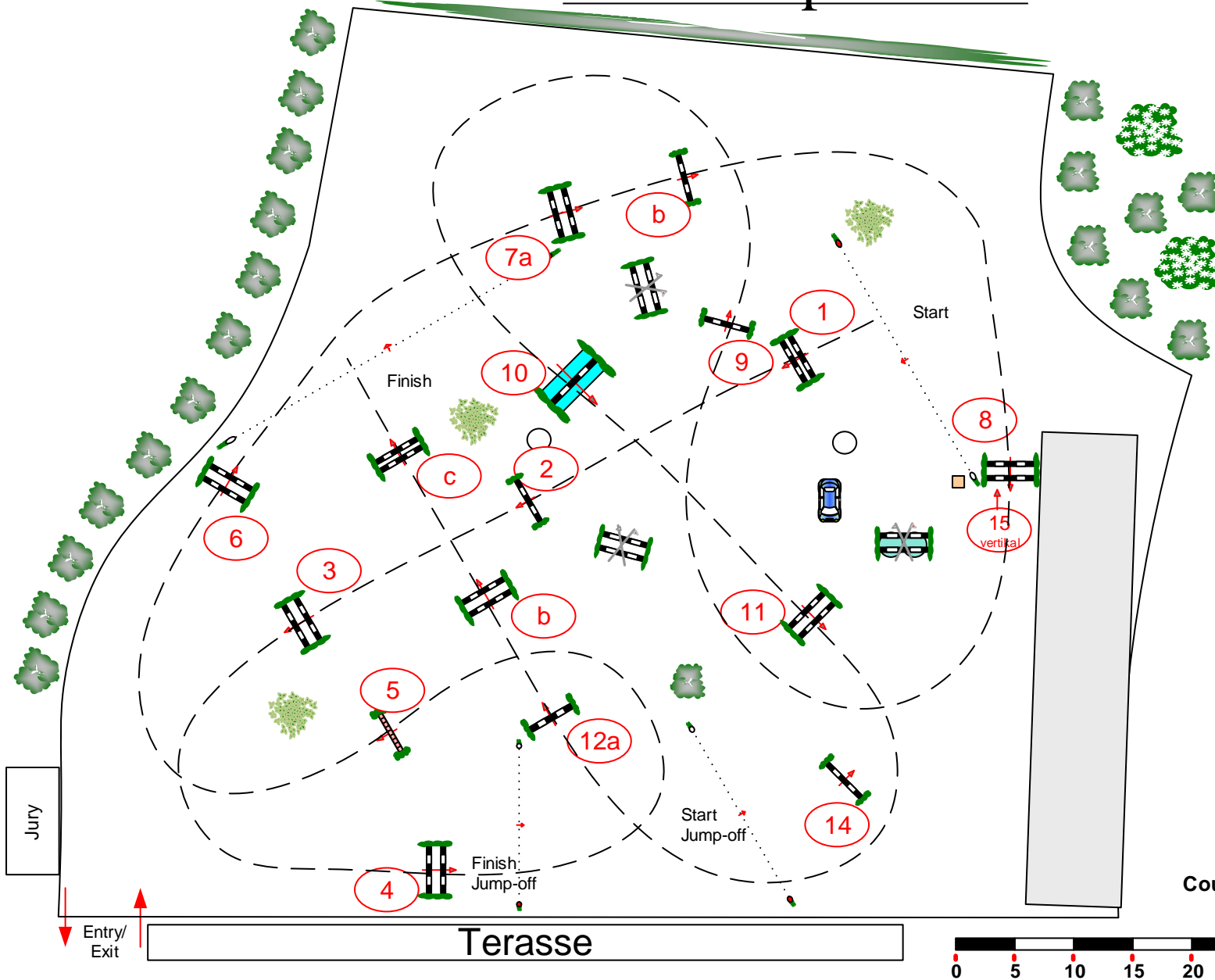




CSI-CH/J/U25-A/CSI1*/CSIYH1*

Eschweiler Young Masters

24.-26. April 2015



Class No.: **21**

CSIJ A Grand Prix

Competition with one jump-off

Sonntag, 26. April 2015

Start: 12:30

Table: A
 National RG:
 FEI RG / Art. 238.2.2
 Height: 1,40 m

Speed: 375 m/min

Length: 490 m

Time allowed: 79 sec

Time limit: 158 sec

1st Jump-off:

14, 15, 11, 12 a, 12 b, 2, 3, 4

Length: 280 m

Time allowed: 45 sec

Time limit: 90 sec

Obstacles: 12 Jump-off: 7

Efforts: 15 Jump-off: 8

Course Designer: Matthias Rosellen/GER & Team